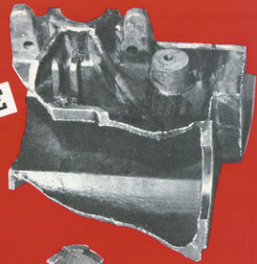


METAL LOCKING SERVICE, INC.

SHIPPING HOUSING PIECES.

REPAIRS URGENT!

REPLACEMENT PARTS UNAVAILABLE



The broken pieces as we received them. Accidents like this do occur, and saving the pieces does help. But in the event they are not repairable or are missing, we can make and machine new ones.

FORTY-SEVEN YEARS OF MAKING REPAIRS LIKE THIS HAS EARNED US A LOT OF FRIENDS. PERHAPS A REPAIR FOR YOU WILL BE OUR NEXT CHALLENGE.

The completed elevator gear box housing, repaired and as strong as new. Photo shows area of repair "touched-up" to emphasize photography. Repair area is actually difficult to detect.

**WHEN YOU NEED...
ACTION - NOT EXCUSES
CALL US!**

WE TAKE PRIDE IN OUR ABILITY TO RESTORE SEEMINGLY NON-REPAIRABLE MACHINE PARTS. WE ARE EQUALLY PROUD OF OUR MACHINE SHOP CAPABILITY.

"FIRST AID FOR METAL"

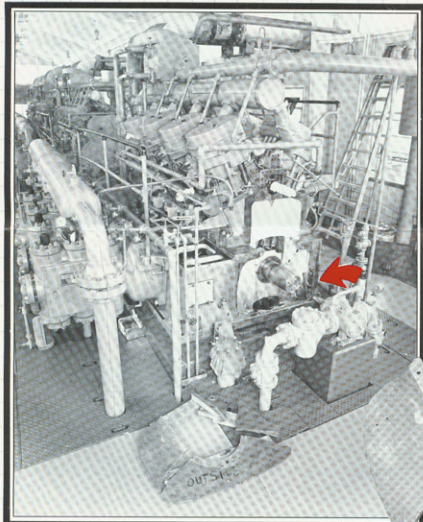


METAL LOCKING SERVICE inc
MLS MACHINE SHOP

88 HAYES PLACE • BUFFALO, NEW YORK 14210 • PHONE 716 / 824-4359

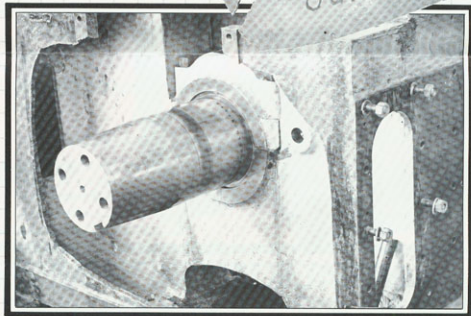
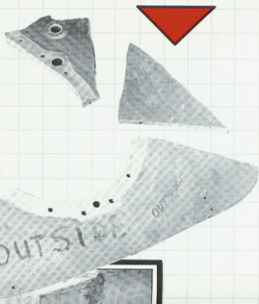
OUR REPUTATION DEPENDS UPON SATISFACTORY RESULTS

A PICTURE STORY . . . OF



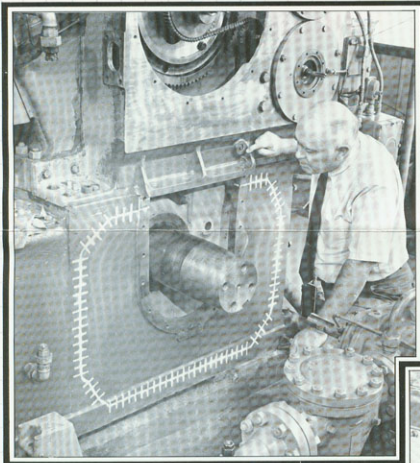
A BROAD VIEW OF A COMPRESSOR ENGINE WITH SECTION OF LOWER MAIN FRAME BADLY SHATTERED.

Note the several pieces in foreground.



A Close-up view showing area of breakage.

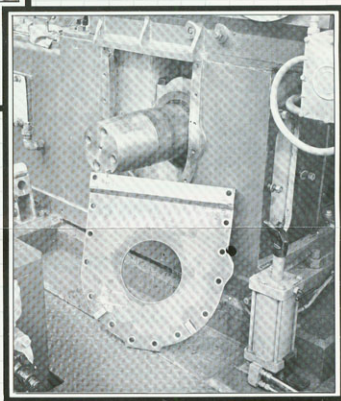
A ROUTINE REPAIR . . .



New cast iron section was cast, machined by Metal Locking to proper dimension and fit into prepared opening. It was then metal locked and sealed against pressure. This area has been highlighted to facilitate photography.

Since parts were not readily available, new cover plate (Shown Here) was also cast, machined and made ready for reassembly.

Note: That completed job on main frame is as it actually appears with no photographic touch up.



It should be apparent what difficulty and expense would be involved to disassemble and replace the lower main frame, even if it was obtainable. In minimal time, a sectionalized repair using our process and that of our machine shop, restored this unit to its original condition.

"FIRST AID FOR METAL"



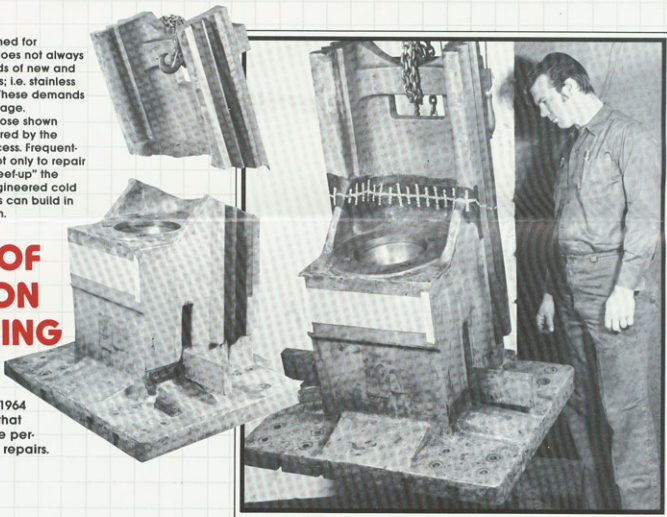
DEMAND EXCEEDS SUPPLY?

Equipment designed for normal materials does not always supply the demands of new and improved materials; i.e. stainless versus mild steels. These demands often cause breakage.

Breaks, such as those shown here, can be repaired by the Metal Locking process. Frequently, we are asked not only to repair but reinforce or "beef-up" the broken casting. Engineered cold mechanical repairs can build in this added strength.

SLIDE OF 200 TON STAMPING PRESS

Ram repaired in 1964 operation since that time attests to the permanence of our repairs.



PERMANENT CASTING REPAIRS

WITHOUT THE USE OF HEAT

ACCEPTED AND ENDORSED BY INSURANCE
UNDERWRITERS

RECOMMENDED BY MACHINE MANUFACTURERS
IN OUR SHOP.....OR YOURS

DESCRIPTIVE BROCHURE AVAILABLE UPON REQUEST

"FIRST AID FOR METAL"



METAL LOCKING SERVICE inc
MLS MACHINE SHOP

68 HAYES PLACE • BUFFALO, NEW YORK 14210 • PHONE 716 / 824-4359