

# We've Been Busy!

AND AS YOU'LL NOTICE WE THRIVE ON  
TOUGH APPLICATIONS



Disintegrator cover with piece broken off. Total fracture measured 15 feet.

Piece re-located, and permanently 'locked and laced' with complete alignment and strength restored.



NO HEAT USED . . . . . NO DISTORTION

Housing from steel mill, shows leg broken completely away.



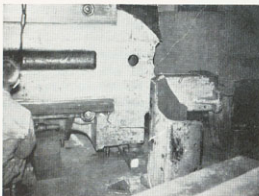
Overload is common with this type of equipment.



Now ready to go to work — even with overload factor.

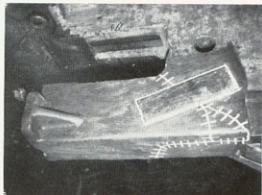
Photo shows one of two steel inserts, and area 'locked and laced'.

FULLY APPROVED . . . . . ECONOMICAL



Main frame of 300 ton press, showing leg broken away.

Repair completed with steel inlay imbedded flush with parent metal. Critical alignment is restored.



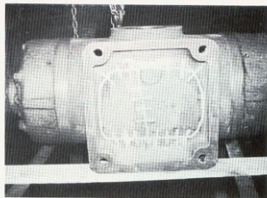
These photos and those on reverse side, are but a few examples of what can be done by the cold **Metal Locking** Process of repair to fractured or broken castings and machine parts.

# NO JOB TOO LARGE . . . . . NONE TOO SMALL



Water in jacket froze and shattered this section.

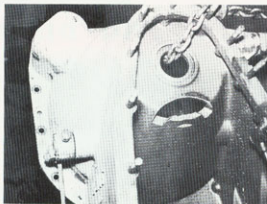
## ROTARY AIR COMPRESSOR CYLINDER



Pieces re-located and locked into position, hydrostatically tested to 100 lbs. p.s.i. upon completion of repair.

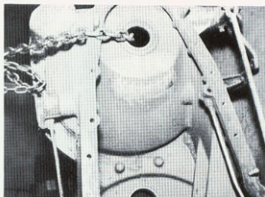
## . . . . . PRESSURE PROOF . . . . .

Loose pin allowed gear to float on shaft. Gear wore this hole in case.



Far right shows new piece fitted and case is as good as new. ➔

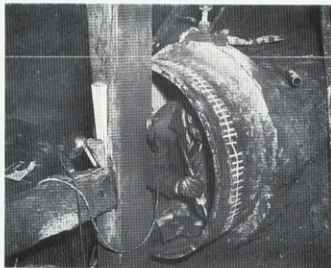
## TRANSMISSION CASE



## PERMANENT REPAIR FOR BREAKDOWN EMERGENCIES

Water filtration plant of City of Buffalo discovered a bad leak in 36" main.

Excavation, some 15 feet deep, exposed a 64" crack in the venturi section, main inlet, of city water supply.



Metal Locking Service was called and operators were rushed to the area. Repairs were completed in 1 1/2 days.

Replacement of section in mid-winter season, would have taken "several weeks" and would have imperiled the city's water supply.

For Further Information — Write or Call

# *Metal Locking Service, Inc.*